

EXISTING WATER QUALITY SCENARIO OF MIRPUR WATER SUPPLY AND DISTRIBUTION NETWORK, NORTH DHAKA CITY CORPORATION, BANGLADESH

Rumman Mawla Chowdhury¹ and Adib Ashhab Ankon²

¹ Assistant Professor, Department of Civil Engineering, University of Asia Pacific (UAP),
Dhaka, Bangladesh

² Assistant Engineer, Bangladesh Material Testing Laboratory (BMTL), Dhaka, Bangladesh

ABSTRACT

The research was conducted to determine the overall quality of consumptive water consumed by households in North Dhaka. This was accomplished by collecting samples from 28 WASA connections throughout the Mirpur zonal region. Aside from WASA water, home tap water from various houses was gathered, as well as the water they use for drinking. The majority of the WASA connection samples yielded high-quality water in both the monsoon and pre-monsoon seasons. The WASA water sample and the House tap water sample did not differ significantly. This demonstrates how WASA drinking water is saved throughout the distribution network. Hardness and fecal coliform levels in household tap water have been determined to be within acceptable drinking water limits, using a filtering technique. Hardness and fecal coliform levels in household tap water were determined to be within acceptable limits. Furthermore, iron and total suspended particles were high in some of the sample places, although Mirpur's water quality is satisfactory when compared to a dense population and widespread lack of water health information.

Keywords: WQI, WASA, Tap water, physio-chemical properties, Water purifying process, Drinking water.

INTRODUCTION

Bangladesh is a third-world Least Developed Country (LDC) where urbanization is outpacing population growth and agglomerations are quickly expanding. The negative effects of urbanization include the loss of agricultural land, challenges with urban food supply, habitat damage, and urban diseconomies.

Water is one of the most important components of human physiology, and man's continued life is strongly dependent on its availability. Water is considered a fundamental factor in life since a man can survive longer without food than he can without water. The increasing human population has put a huge demand on the supply of safe drinking water, particularly in developing countries like Bangladesh. The water they drink is tainted in a number of ways by harmful and damaging elements like pesticides, insect bites, and other things. Many consumers have also reported odor and hair loss as a result of the tainted water. Geological conditions, water treatment facilities, pipe leaks, and pipe corrosion can all lead to water pollution.

The World Health Organization (WHO) estimates that improved drinking water sources supply 89 percent of the world's population. Water quality must be assessed on a regular basis since the human population suffers from a range of waterborne illnesses as a result of drinking contaminated water. Based on public opinion surveys and laboratory test results, the BBC determined that the quality of drinking water in the Mirpur district is improving.

The main purpose of the study is to analyze the water collection and distribution systems on the ground and in residences in the MIRPUR district. The analysis will establish whether or not WASA's supply system requires improvement. Furthermore, efforts have been undertaken to educate the Dhaka City Corporation and WASA communities about the current situation of water supply networks. The goal of the study is to determine the differences in impurity removal performance across various water purifying systems, as well as to learn about the current Mirpur WASA connection status. This research can help determine the quality of the water.

Water samples were gathered from 28 different connections spread over the Mirpur zonal zone. WASA samples were examined for pH, DO, Color, Conductivity, TDS, TSS, Hardness, Turbidity, Fe, Fecal Coliform, E-coli, and Chlorine readings at the three sampling stations are high due to the use of

disinfectants. The overall dissolved and suspended material levels in both supply and WASA water were high. The boiling method was shown to be the most successful in removing fecal coliform.

Mirpur is the biggest area in Dhaka and is home to around 10 million people. There have been no additional investigations on the Mirpur water supply system or water quality. Despite the substantial investigation, the project faces major hurdles. Choosing the perfect pump for a certain site, for example, was a difficult process.

Current Water Demand and Production

DWASA estimates total water consumption at 150 liters per person per day and deliver water to city inhabitants accordingly. DWASA's capacity allows it to meet current water demand. DWASA, on the other hand, has never met its production objective and actual output for groundwater and surface water with a demand-supply mismatch. Furthermore, if we account for Unaccounted for Water (UFW) or system loss between production and end-user level, the true supply is 1426.18 MLD. According to the table-I, about half of Dhaka's population does not have access to the DWASA's estimated standard water need (150 l/p/d). Furthermore, there are 1330 and 1500 DTWs operated by private agencies and other unidentified sources.

Table 1 Water production scenario of DWASA.

MLD	Production Capacity	Actual Production	Source wise % of production	% of capacity	No. of DTWs and SWTP in operation
Groundwater	1948.30	1831.20	93.99	87.72	560
Surface water	299.17	256.30	85.67	12.28	4
Total	2283.47	2087.5	179.66	100	564

Source: Dhaka WASA.

Study area

Mirpur is the largest and most densely inhabited area in Dhaka. The management of WASA pumps and supply lines is a major concern in this area. This research will aid in improving maintenance quality and increasing consumer trust. It may also be determined if the water that people drink is safe to drink.

Table 2 WASA condition in the Mirpur area.

Total WASA pump no at whole Mirpur	Dual pump setup 20+Normal pump 97=117
Water Demand at Mirpur	27 crores liter/day
Source of water	90% groundwater and 10% surface water.
Source of surface water	Pagla water treatment plant at Sayed Abad
The purification process of water by WASA	Chlorination
the peak hour of water demand	morning (7.30-10.30) am, and night (6.30-9.00) pm
Running Pump condition	30% of pumps are running with the new setup, 70% of the pump are running with an old manual setup
Improvement process of WASA pumps	Ongoing

Source: Dhaka WASA, Mirpur Zone Office

The Mirpur Model Thana (Dhaka metropolitan) has an area of 58.66 square kilometers and is located between the latitudes of 23°46' and 23°48' north and the longitudes of 90°20' and 90°22' east. It is bounded on the north by Shah Ali and Pallabi thanas, on the south by Sher-e-Bangla and Darussalam thanas, and on the east by Pallabi and Kafrul thanas, with a total population of around 1,074,232. Mirpur Model Thana, located north of Bangladesh's capital Dhaka, was founded in 1962. North Dhaka City Corporation operates 38 WASA pumps, which serve as the sole source of water for over 6 million people. Every day, they use around 1000 c. liters of water.

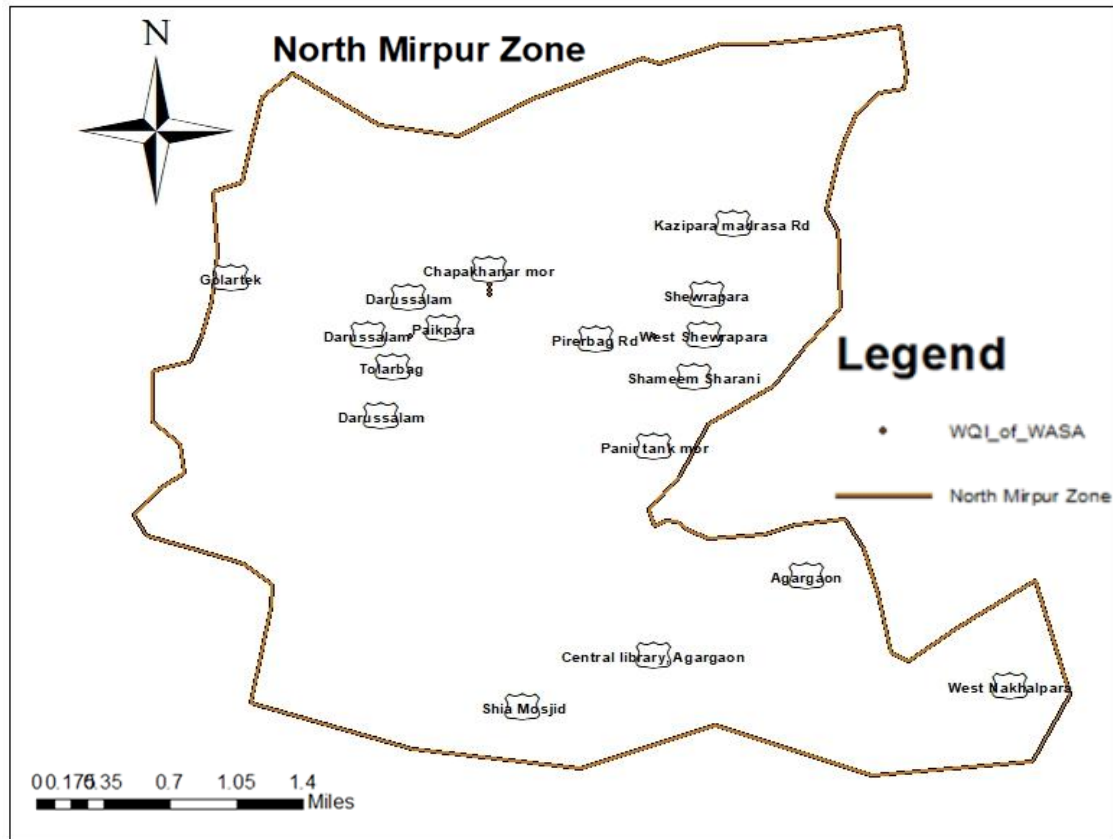


Figure 1 Study area and Sampling points in Mirpur.

Current situation of selected WASA pumps

Dhaka North City Corporation has about 38 WASA pumps. Around 6 million people are living there. They drink roughly 1000c.L of water every day. WASA is their sole supply of water. Pump lines carrying water are obstructed in several areas. Another issue in those pump lines is water leaking.



Figure 2 (a) Water reservoir. (b) WASA water pump.

The WASA water reservoir in Figure 2 is not adequately maintained. There is waste here and there. The tank's lid is open. There is no pump schedule accessible there. The pump header is also broken. Bricks support the whole pump structure. There is a lack of upkeep here.

METHODOLOGY

The Mirpur water supply network map is used to collect drinking water samples in Mirpur. Initially, a field reconnaissance investigation was conducted, and sample stations were selected to cover the whole DWASA distribution network. For this reason, one-liter and 0.5-liter plastic bottles are used. They are thoroughly cleaned by rinsing them three to four times with sample water. The sampling vials are then filled to the full and promptly sealed to prevent air exposure. The samples are promptly transported to the Laboratory for further testing and analysis shown in the following flow chart (Figure 3). The water

quality parameters are evaluated by comparing the test findings to both the Bangladesh Drinking Water Standard (BDS) and the WHO drinking water quality recommendations.

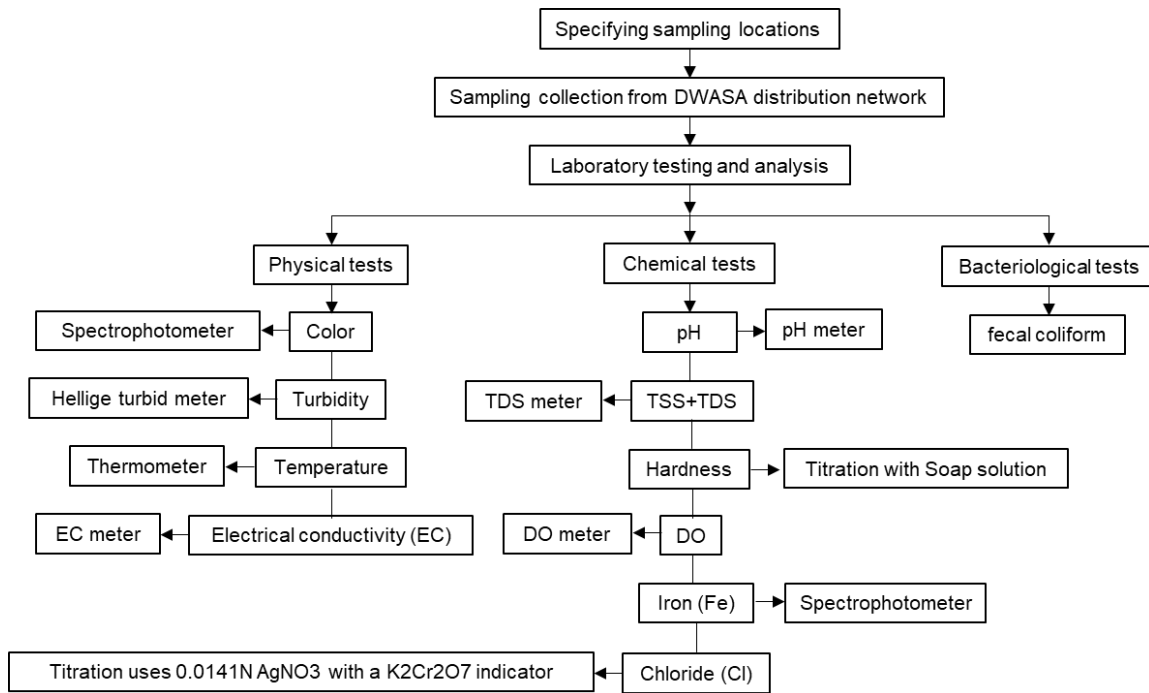


Figure 3 Methodological process of the study.

Collection of WASA information

WASA provided a wide range of data to analyze the overall status of the study area's water supply system. This information was collected directly from the WASA office, with some originating from an internet domain. Using WASA data to obtain critical information and pinpoint particular regions.

Questionnaire survey and Informal Interview

A questionnaire survey, informal interviews, and open discussions were conducted with the authorities of various concerned organizations, WASA, experts, and people living in the Mirpur study area to uncover the inherent problems of city dwellers caused by the Mirpur water supply system and its associated impact on local life. 79% of purchasers are unhappy with the stench of their home's tap water. Water might be coming from a defective tap or a damaged household supply line. Overall, 10% of consumers are pleased with the odor quality of their tap water, while 79% are dissatisfied.

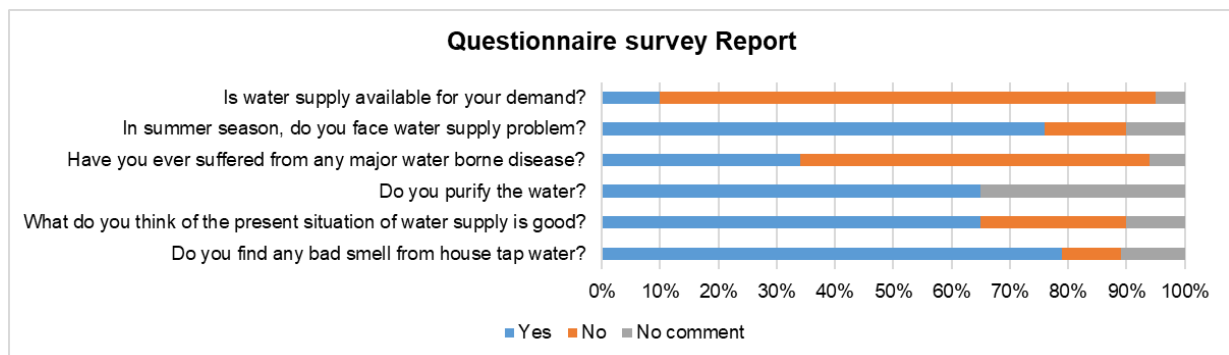


Figure 4 Questionnaire survey Report.

Although 65% of locals are satisfied with the quality of their water supply, 25% are dissatisfied with the amount. 10% of those questioned did not reply to this question. The amount of water available at the tap is determined by the size of the reservoir and its supply line.

Mirpur has a large number of uneducated residents. Because of their illiteracy, their income is restricted to 5000 Tk. 35% of people are not aware of any form of filtering system. Many people are unaware that boiling is a method of purification. 65% of respondents used a known purification process to purify their water.

Water-borne infections such as cholera, typhoid, jaundice, and others have affected 34% of the population. These illnesses can be found in residential tap water due to the high percentage of fecal coliform. The remaining 60% of people had no significant ailments.

During the summer, WASA provides less water to people because they use more water and the groundwater table decreases. The problem impacted 76% of people, although 14% had no issues because there were fewer people in the family. Water is limited throughout the summer because WASA must repair water pipes on a regular basis.

Mirpur's fast-growing population drives up demand for WASA water on a regular basis. Because of their old equipment and pump, they are unable to satisfy demand. The pressure in the supply pipes is not distributed evenly. According to demand, supply is inaccessible to 85% of people. Only 10% of residents were satisfied with their water supply.

DATA ANALYSIS AND RESULT

All the collected data from the lab test and questionnaire survey both have been analyzed by using some statistical computer software and the analyzed data have been compacted.

pH

The World Health Organization (WHO) recommends a pH range of 6.5 to 8.5 for drinking tap water. Some changes were seen, however, the most significant modification occurred in Sample No. 3. (House Tap Water). On the graph, drinking water sample 4 has the highest pH value, while supply water sample 3 has the lowest. The pH of water can alter regularly due to photosynthesis and respiration. Carbon dioxide is the most common cause of acidity in water.

DO (Dissolved Oxygen)

Dissolved oxygen levels should be between 5-7 mg/l. WASA sample 10 had the highest DO value of 9.56 mg/L, whereas supply point 17 had the lowest value of 2.49mg/L. This change is not restricted to a single source of water; it is possible with practically any source of water.

Color

WASA water has a deeper color than drinking and domestic tap water. Because of the depth of the WASA pump, some soil particles are present. The WHO color standard is 15 Pt-Co. samples were evaluated, and the hue of the other two samples is minor in the absence of WasA water. WASA sample 9 has a color value of 61 Pt-Co. The lowest value in various samples is 0 Pt-Co. Color rises as contaminants increase. Particles suspended in bodies of water can be created by both natural and human activities.

Conductivity

The main source of unwanted conducted water is inadequate supply pipe network maintenance and an illegal line of house tap water network. Nos. 7 and 8 in our sample samples are highly conducted. The greatest conductivity value for drinking and WASA water is 602 μ /c, while the lowest value is 0 μ /c in sample 17. Water conductivity varies with the number of ions in the water. The greater the concentration of ions in water, the greater its conductivity. The type of items dissolved in water also affects its conductivity. The temperature of the water might be one influence.

TDS (Total Dissolved Solids)

WASA and household tap water had higher TDS than drinking water. The WHO standard for total dissolved solids in water is 1000 mg/L. Before consumption, drinking water is filtered with a water purification filter or boiled. WASA sample 8 had the highest TDS level of 290mg/L, while drinking point 7 had the lowest at 116.3mg/l. The substance, however, dissolves in WASA water and goes through the supply network. The amount of solid in the supply line may occasionally be increased due to insufficient supply line maintenance.

TSS (Total Suspended Solid)

TSS has a WHO-recommended value of 50 mg/L. The maximum TSS value in drinking water point 15 is 29 mg/L. Several of the lowest values are 0 mg/L. In the sample water graph, WASA water had a little higher TSS than house tap water and drinking water. We can overcome this challenge with proper instruction and maintenance. However, consuming water sample 15 worsened the situation. TSS is significantly more abundant than its range. There are certain particles present, and the water they consume is quite dangerous. Impurities in the supply chain may affect TSS. This is possible owing to a lack of upkeep. Temperature can also influence the measurements. The higher the TSS number, the more pollutants there are in the line.

Hardness

The maximum hardness value, according to WHO, is 500 mg/L. The highest hardness value in the graph is 181 mg/L for sample 3 at the WASA point. Water hardness is defined as the amount of calcium and magnesium dissolved in water. Hard water includes dissolved minerals in high concentrations, particularly calcium and magnesium. We can observe from the sample water graph that the hardness of WASA water is rather high at one point. The main cause of the unfavorable outcome is insufficient pump filtration maintenance. All of the sample water findings are moderate to good without it.

Chlorine

According to extensive studies, long-term exposure to chlorinated water may increase the occurrence of asthmatic attacks. Chlorine is a highly powerful disinfectant that is added to the public water supply system to kill pathogenic organisms such as bacteria, viruses, protozoa, and many others. By boiling the water, it can remove it. However, we find a greater range of Cl in our sample graph. This might happen as a result of poor maintenance of the WASA system and the household tap water supply. The home hole does not eliminate that much. The WHO standard for chlorine is 1000 mg/l. The highest concentration of chlorine was found in drinking sample point 4 and the lowest concentration was 0, found in the majority of the samples.

Turbidity

The highest turbidity value, according to WHO, is 5 FTU. The greatest turbidity value measured at WASA sampling site 9 was 13 ftu. The bulk of the sample points has a value of 0. Because of microscopic particles from the earth and nature, water can become murky. The fine soil particle is the root cause of this. We can see from the sample graph that our WASA sample is substantially more turbid than the others. The primary reason for this is the upper level of the water table, often known as the aquifer. WASA suck pumps their water from the top water layer in the upper pick of the graph. This sort of occurrence occurred as a result. The turbidity in the second sample is low.

Alkalinity

If any changes are made to the water that may cause the ph values to rise or decrease, alkalinity acts as a buffer, protecting the water and its occupants from the sudden changes in PH. The ph of alkaline water is higher than that of regular drinking water. The ph of alkaline water is 8 or higher. In general, when the salt content of the water increases, the water becomes alkaline. Our drinking water sample has a significant rise in salt content. As a result, the sample of drinking water becomes alkaline. The WHO alkalinity standard is 100 mg/l, yet the highest value in the graph is 125.2 mg/l in drinking water sample no 8. The lowest result in drinking water sample no. 5 is 40.56 mg/l. Furthermore, several samples are within or slightly above the range.

Fe:

Iron is a prevalent issue in Bangladesh. Water source, water table, although the aquifer is iron-rich. Digging underground and drawing water from a deep aquifer can fix this problem. Our sample of WASA water included a significant percentage of Fe. However, the Fe level is moderate to low after purification and delivery. In general, the graph illustrates this sort of situation. Iron has a WHO recommendation of 1 mg/l. On the sample graph, sample 02 has a high iron value. The content is also 1.06 mg/l. The lowest iron value in the bulk of the samples is 0.

Fecal Coli form

The presence of sewage contamination in the canal, as well as the potential existence of other harmful species, is indicated by Fecal Coli from bacteria. The house tap water in our sample is entirely infected with fecal coliform, which is a major source of water contamination. That is not a promising sign. This is an indication of sewage pollution in the supply network, and the tap water in the residence contains a high concentration of bacteria. The World Health Organization's standard value is 0mg/l. On the graph, the maximum value of fecal coliform is 22 CFU/100ml in tap id 9. In terms of value, the bulk of the sample value is lower.

Table 3 Water quality of different water sources.

Parameter s	Max Value			Min Value			Standard Deviation		
	WASA water	Drinking Water	Tap Water	WASA water	Drinking Water	Tap Water	WASA water	Drinking Water	Tap Water
pH	8.32	8.52	8.54	6.4	6.76	6	0.58	0.55	0.68
DO	9.56	8.75	8.55	3.12	2.49	3.97	1.80	1.54	1.56
Color	61	43	32	0	0	0	17.54	14.05	8.46
Conductivity	499	494	602	262	0	0	65.49	104.71	132.06
TDS	241	196.2	261	121.3	120.5	126.5	43.23	34.77	49.18
TSS	12	5	5	0	0.49	0	3.24	1.55	1.23
Hardness	181	127	168	94	29	58	26.11	24.32	29.06
Cl	80.08	246.25	195.2	7	4.4	4.9	21.62	61.86	56.61
Turbidity	13.07	6.33	6.33	0	0	0	3.41	1.82	2.10
Alkalinity	106.17	125.2	91.14	54.86	53.08	50.58	11.87	18.99	11.98
Fe	1.06	1.06	0.33	0	0	0	0.33	0.26	0.12
Fecal Coliform	14	8	13	0	0	0	3.71	2.32	6.48
Temp.	26.6	27.2	26.9	19.5	19.5	19.4	2.10	2.05	2.05

Residential tap water conductivity varies. Both supply and WASA have high total dissolved and suspended solid values. They are, nevertheless, within a safe range. Some WASA samples are more difficult than others. Because disinfectants were used, the Cl value of the three sample locations is high. WASA turbidity in one sample is extremely high. We discovered that the WASA water samples had a high amount of iron. However, both supply and drinking water is rather restricted. We discovered that fecal coliforms are prevalent in household tap water. Other metrics that we looked at were within acceptable ranges.

Water quality index (WQI)

The water quality index (WQI) is a 100-point scale that summarizes results from different measurements when complete. WQI depends on the parameters that are tested and changes with the value of the parameters.

Brown method: In 1970, the National Sanitation Foundation created a Water Quality Index (WQI). The index reflects the combined effect of key physical and chemical factors. The index application provides a defined, intelligible unit of measure that responds to changes in water quality. The calculation of WQI was made by using the following equation:

$$WQI = \frac{\sum QiWi}{\sum Wi} \quad (1)$$

The quality rating scale (Qi) for each parameter is calculated by using this expression:

$$Qi = 100 \left[\frac{Vi - Vo}{Si - Vo} \right] \quad (2)$$

Where,

Vi is the estimated concentration of the ith parameter in the analyzed water

Vo is the ideal value of this parameter in pure water

Vo = 0 (except pH = 7.0 and DO = 14.6 mg/l)

Si is recommended standard value of the ith parameter

The unit weight (Wi) for each water quality parameter is calculated by using the following formula:

$$Wi = \frac{K}{Si} \quad (3)$$

Where,

K = proportionality constant and can also be calculated by using the following equation:

$$K = \frac{1}{\sum \left(\frac{1}{Si} \right)} \quad (4)$$

Table V shows the water quality rating according to this WQI.

Table 4 Water quality rating as per weight arithmetic water quality index method.

WQI Value	Rating of Water Quality
0-25	Excellent water quality
26-50	Good water quality
51-75	Poor water quality
76-100	Very Poor water quality
>100	Unsuitable for drinking water for supply after conventional treatment

When all measurements are completed, the water quality index (WQI) is a 100-point scale that summarizes the data. WQI is determined by the parameters that are tested. The value of WQI fluctuates as the parameters' values vary.

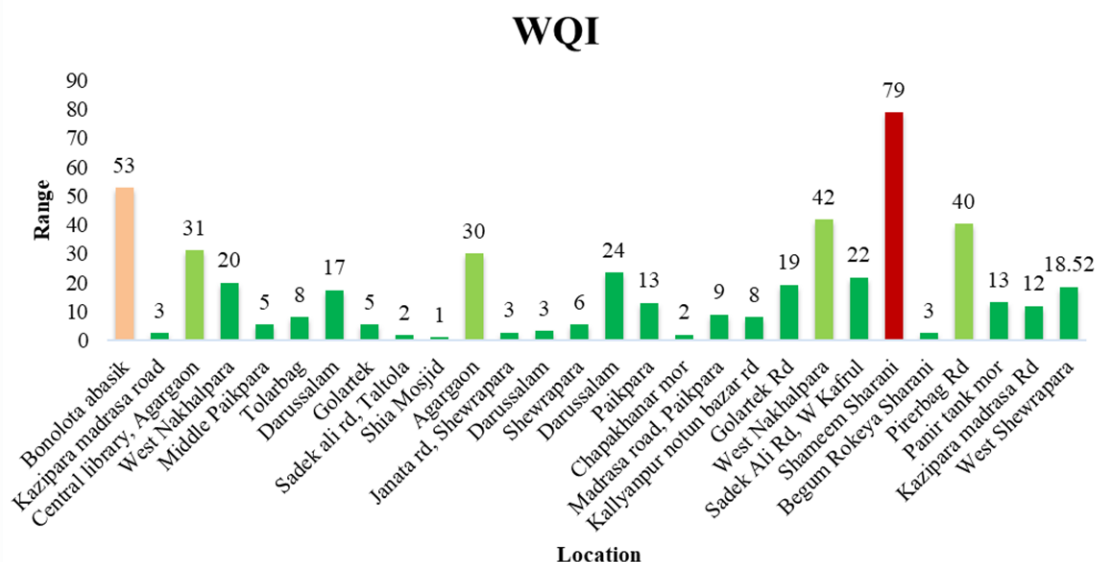


Figure 5 Water quality index and its range (WASA water).

WQI and parameter values alter disproportionately. The value of sample 23 in the accompanying water index number table is in the poor range, whereas sample 01 is in the medium range. Other samples are in the good to outstanding category.

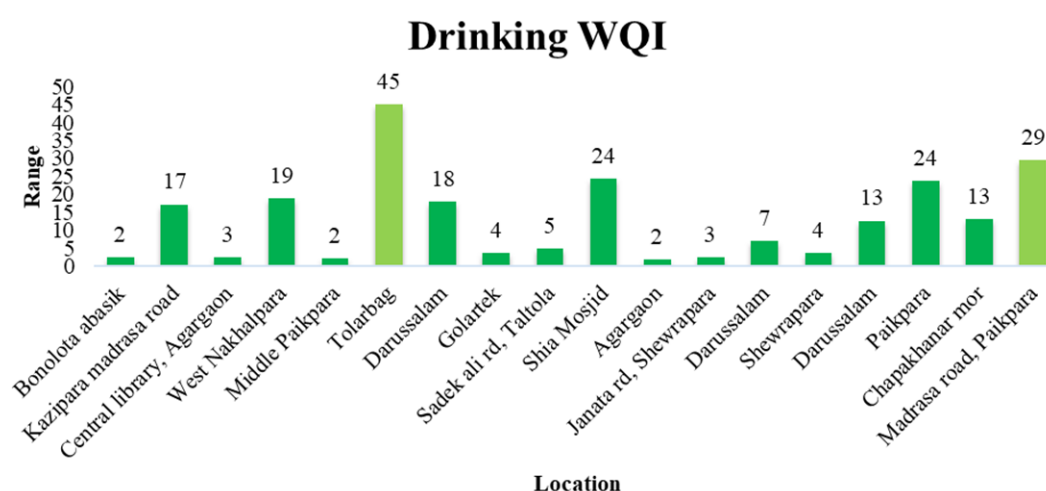


Figure 6 Water quality index and its range (Drinking water).

The highest value on the graph is for drinking water in Tolarbag. However, it is within a reasonable range. Paikpara's Madrasa Road is also within walking distance. Other water in the region is great.

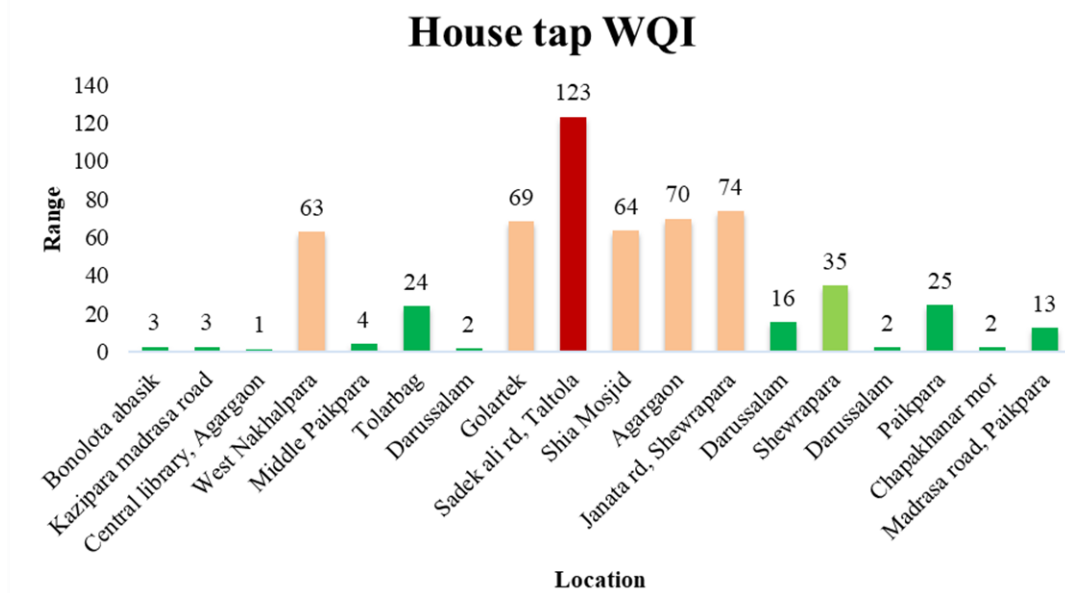


Figure 7 Water quality index and its range (Tap water).

Taltola's water is of very poor quality. West Nakhhalpara, Golartek, Shia masjid, Agargaon, and Janata road Shewrapara samples are all in the middle range. Other samples from other places are either outstanding or good.

WASA water in pre-monsoon and monsoon periods

The quality of parameters of DWASA-supplied water mostly changes throughout the years. The parameters are found in different quantities in different seasons. The changes are shown graphically in Figure 8. The value of pH is changing in the pre-monsoon period but is almost stable during the monsoon period. From the graph, it can be seen that the DO of the pre-monsoon period is unsteady. But it is steady during the monsoon period. In the premonsoon period the conductivity of water is not changing much without the highest peak sample no 4. The value of this pick is 499 μ /c. But in the monsoon period, a sudden degradation happens at sample 7 and then it shows consistency. At some point TDS value changes in the premonsoon period but it is more consistent afterward. But during the monsoon period TDS shows more inconsistency. In the monsoon period sample, 6 shows the lowest TDS which is 140mg/l but sample 7 shows the highest value 312mg/l. After that it is steady.

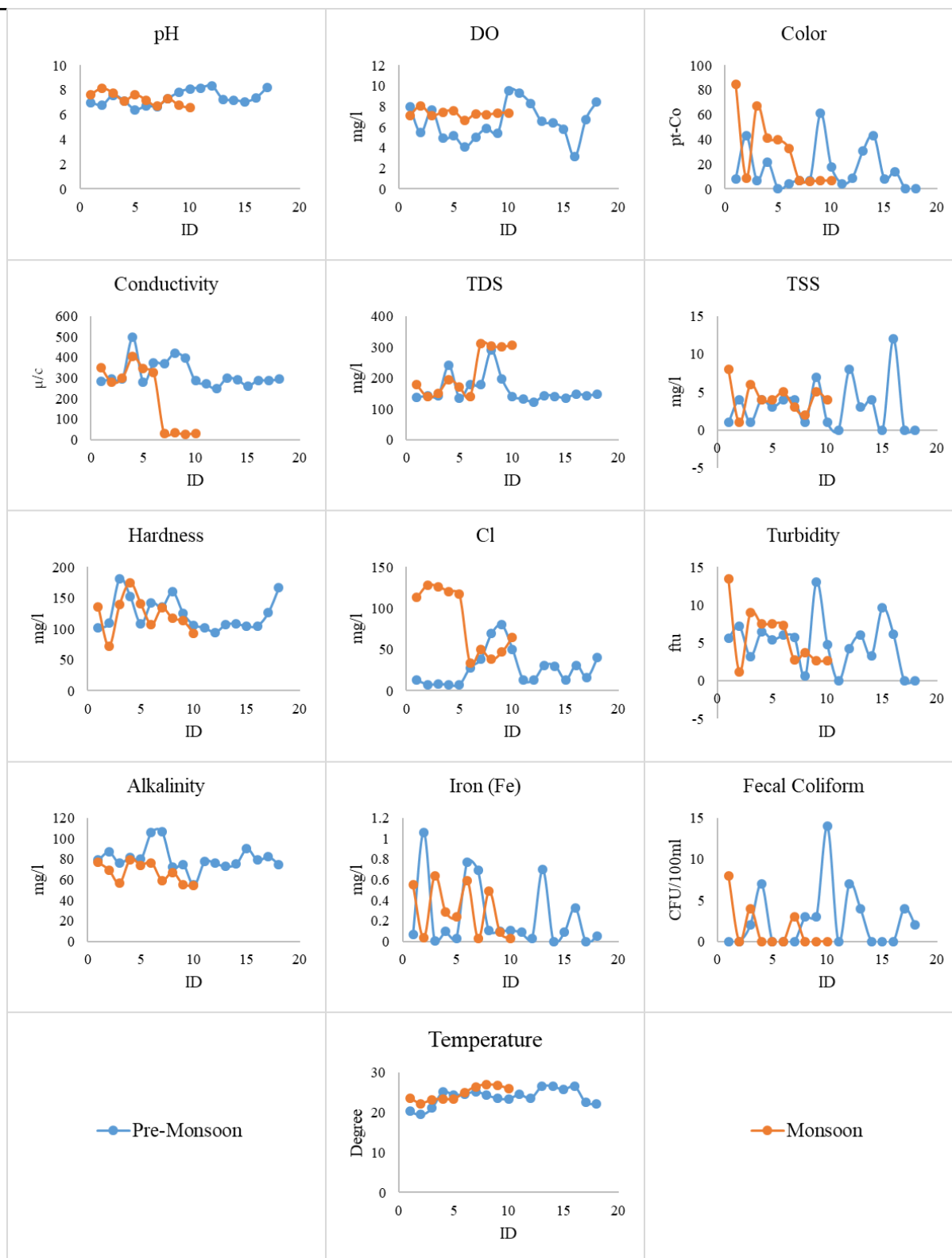


Figure 8 Variation of water quality parameters in monsoon and pre-monsoon seasons.

TSS shows ups and down values during both the pre-monsoon and monsoon periods. The highest value of TSS in the pre-monsoon period is 16 mg/l at sample id 12. And in the monsoon period, the highest value is 8 mg/l gin sample 1. During the monsoon and pre-monsoon periods, the value of hardness is changing rapidly. The highest value of hardness in the pre-monsoon period is 181 mg/l at sample no 3. In the monsoon period, the highest value of hardness is 175 mg/l at sample no 4. The highest value of chlorine in the pre-monsoon period is 80 mg/l at sample no 8. In the monsoon period, the highest value is 128 mg/l at sample no 2. All the values of both the monsoon and pre-monsoon periods are not stable. The highest value for the monsoon period is 13.42 ftu in sample 1 and the highest value for the pre-monsoon period is 13.07 ftu in sample 9. Overall the values of alkalinity in the

premonsoon and pre-monsoon period are stable. The highest value in the premonsoon period is 106 mg/l and 79. mg/l in the monsoon period. The value of iron is changing frequently throughout the whole premonsoon and monsoon period. The highest value in the premonsoon period is 1.06 mg/l at sample no 2. And the highest value during the monsoon period is 0.64 mg/l at sample no 3. Fecal coliform shows variation in both pre-monsoon and monsoon periods. The highest value is 14 CFU/100ml in sample no 10 in the pre-monsoon period. And the highest value in the monsoon period is 8 CFU/100ml in sample no 1. Temperature shows variation in both pre-monsoon and monsoon periods. It crosses 25°C in monsoon and decreases to 19°C in non-monsoon.

CONCLUSIONS

Households in Mirpur localities have not only had insufficient water delivery, but also a severe lack of domestic tap water during the pre-monsoon season. Water quality test results from 28 DWASA sites in the Mirpur region, as well as the DWASA distribution system. Drinking water is also tested for purity. The water quality test of the targeted sample revealed that the sample's water quality is sufficient. Though the observed values of pH, turbidity, alkalinity, hardness, BOD₅, Total dissolved solids (TDS), Total suspended solids (TSS), and Fecal coliform were mainly within the acceptable range, several parameters in virtually all of the chosen samples were higher or lower. This difference does not represent a major change in water quality in the Mirpur region. The piped water supply systems used by DWASA are often buried in intricate reticulations and are challenging to run and maintain. Nonetheless, they are equally crucial in maintaining the availability of clean drinking water as water resources and treatment facilities.

The water supply line for domestic usage should be of good quality, and the trash disposal should be a point of contention. To protect those facilities, continuous monitoring facilities should be installed in the distribution system. More data-gathering findings should help to fine-tune the process. Public knowledge can also play a significant role in preventing such issues.

REFERENCES

- [1] Chaturvedi M. K.; Bassin J. K., Received: 25 November 2008 / Accepted: 10 March 2009 / Published online: 3 April 2009, © Springer Science + Business Media B.V. 2009. 'Assessing the water quality index of water treatment plant and bore wells, in Delhi, India'
- [2] Brown, R. M.; McClelland, N. I.; Deininger, R. A.; and Tozer, R. G. A Water Quality Index Do We Dare? *Water and Sewage Works* (Oct. 1970); also presented at National Symposium on Data and Instrumentation for Water Quality Management, July 1970. "A water quality index crashing the psychological barrier."
- [3] O'Connor, M. F. The Application of Multi-Attribute Scaling Procedures to the Development of Indices of Water Quality. Ph.D. dissertation, University of Michigan, 1971.
- [4] Deininger, R. A., and Maciunas, J. J. A Water Quality Index for Public Water Supplies. Report of a research study, University of Michigan, 1971.
- [5] MASUD, M.D.A., B.Sc, M.Sc. in Civil Engineering. June 2016. "Observation of Water Quality and Supply System in Dhaka City"
- [6] Bipasha, D. | Published: April 22, 2018 20:25:36 | Updated: April 25, 2018 "When slum-dwellers get legal WASA connections "
- [7] Mahbub, K.R., A. Nahar, M. M. Ahmed and A. Chakraborty, [2011]. Quality Analysis of Dhaka WASA Drinking Water: Detection and Biochemical Characterization of the Isolates.
- [8] Abstract Proceedings of the 3rd International Water History Association Conference, Alexandria: 2003.
- [9] World Health Organization (WHO). 1996. Guidelines for Drinking-Water Quality - Second Edition- Volume 2 – Health Criteria and Other Supporting Information. International program on chemical safety, Geneva.
- [10] Mahbub. KR, A. Nahar., MM. Ahmed., A. Chakraborty., "Quality Analysis of Dhaka WASA Drinking Water". KR Mahbub added as the First author on 08/08/2012 and corrected PDF loaded on 08/08/2012.
- [11] Fahmida, Kani; Rahman. Hasibur.; Lemon. Md.; Saiful, M.d.I.; Kader, M.d. A., Undergraduate Student, Dept. of Civil Engineering, Khulna University of Engineering & Technology. 'Assessment of Supplied Water Quality of Khulna WASA of Bangladesh' International Conference on Mechanical, Industrial and Materials Engineering 2013 (ICMIME2013) 1-3 November, 2013, RUET, Rajshahi, Bangladesh.

- [12] Ahmed, M.F. and Rahman, M.M., Water supply & sanitation, International Training Network (ITN), Bangladesh University of Engineering and Technology (BUET), Bangladesh, 2000.
- [13] Zuthi, M.F.R.; Biswas, M.; and Bahar, M.N.; "Assessment of House tap water Quality in the Chittagong City", ARPNJournal of Engineering and Applied Sciences, vol.4, No.3, pp.73-80, 2009.
- [14] Nasrin, S.; Saha, S.K.; and Rahman, M.M.S., "Assessment of house tap water quality of Khulna City Corporation, Khulna, Bangladesh", Khulna University Studies, vol.6, No.1-2, 2005.
- [15] WHO (World Health Organization). Guidelines for drinking water quality, World Health Organization, Geneva, Switzerland, 2006.